

Installation Topall

For system:

Windows10/Windows8/ Windows7/Vista/XP

X64 or X86

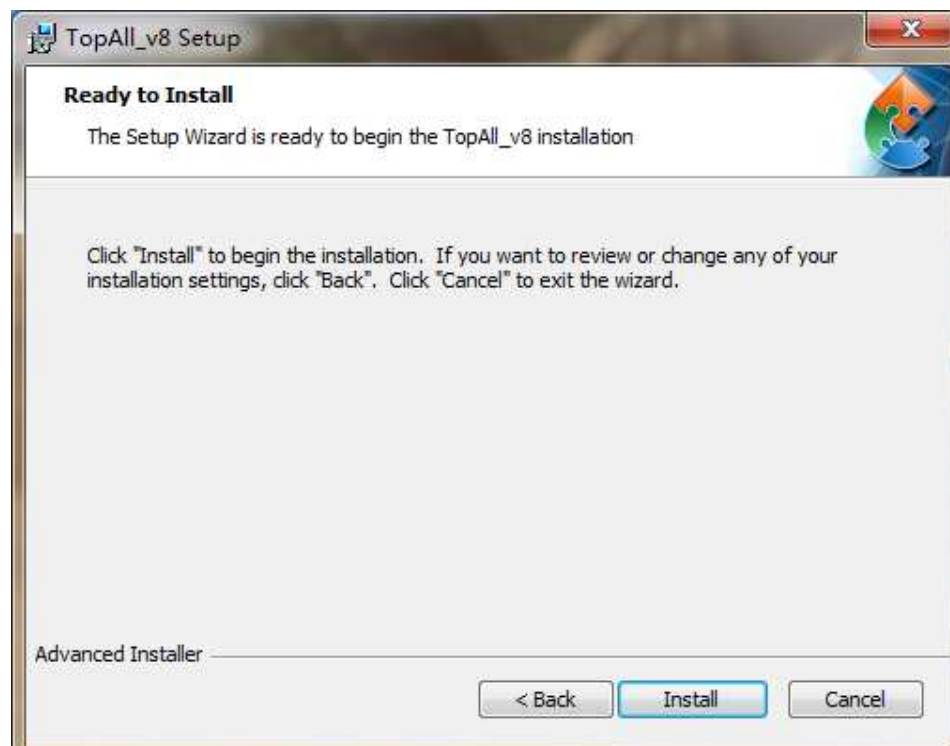
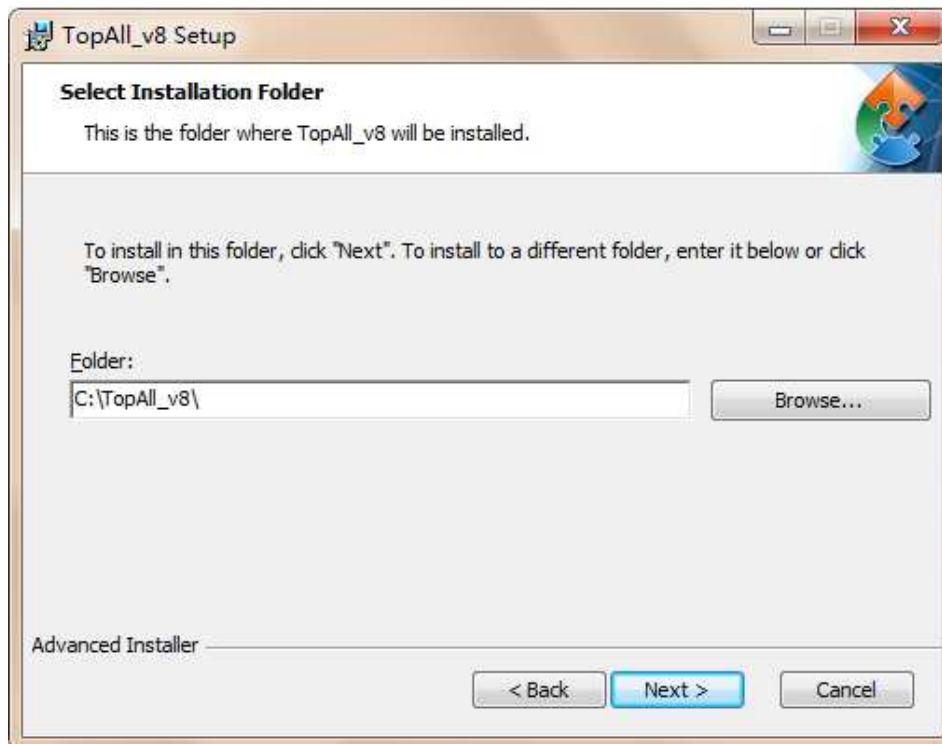
Require hard disk space: 50M

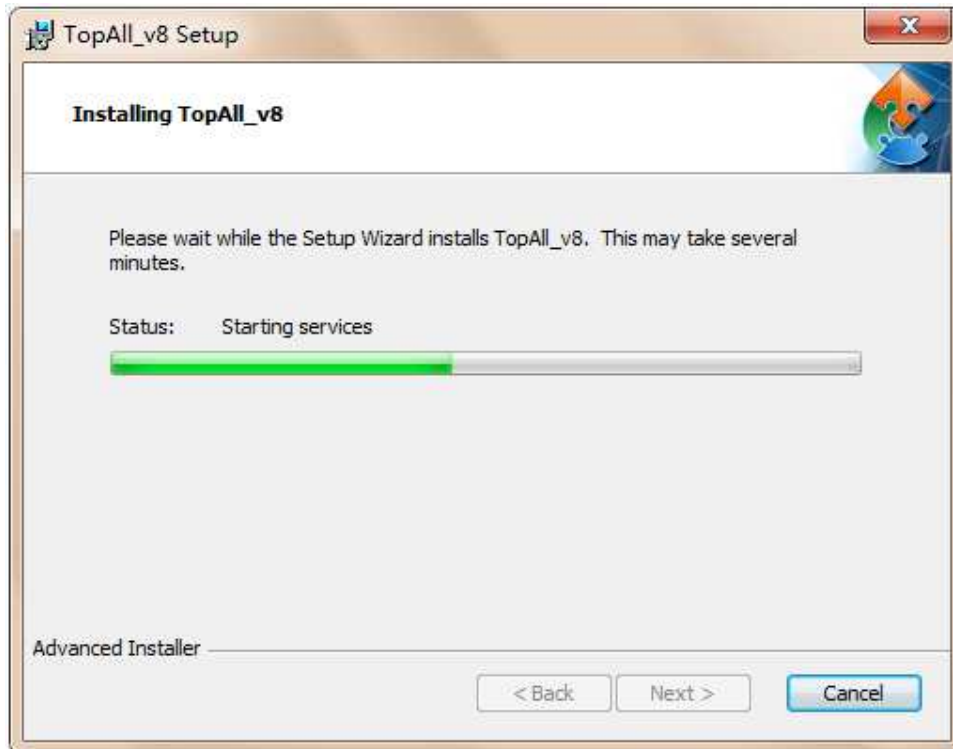
(1) Prearrangement

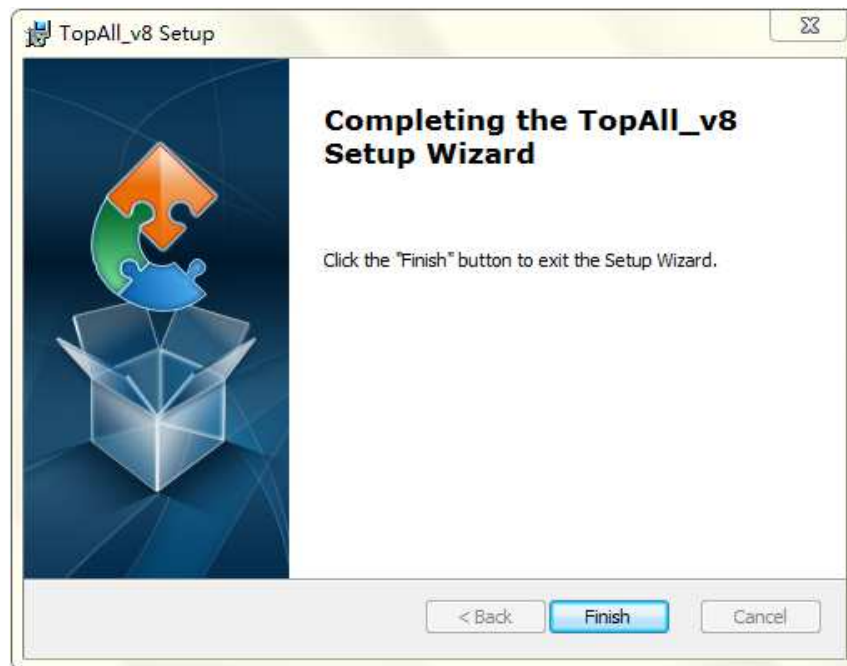
- Start computer with 'Administrator';
- Connect programmer with the cable;
- Prohibition of antivirus software;

(2) Run Setup_Topall_ver8.msi;

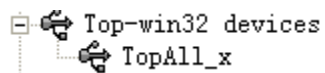








Check device manager to see if the USB driver is installed correctly.



If no this line, you had to restart computer with "Prohibition of digital signature" and then setup topall again.

How to do when USB driver error

Windows10/8.1

1. Change to Administrator

- Go to Start.
- Select Control Panel
- Go to User Accounts.
- Click "Manage Another Account".
- Select the account you want to manage.
- Click "Change account type".
- Tick the administrator option.
- Click "change account type" to implement the changes.

2. Disable driver signature

- In the **Modern UI** control panel find 'Update & recovery' on the left hand side of the menu.
- Once in 'Update & recovery,' select 'Recovery' in the list of options on the left hand side of the **modern ui** menu.
- After restarting in the advanced mode, a screen will come up with two options. Select the 'Troubleshoot' option.
- When the 'Troubleshoot' option is selected, another window will appear. Find and click the option that says 'Advanced options'.
- In the advanced options window, select the 'Startup settings' option.
- Inside the 'Startup settings' window, a list of selectable boot options will appear. chose disable driver signature enforcement.(Win7 press the [7] key,Win10 press [OK])
- Once you've selected the option to disable driver signature enforcement reboot back into windows.

3. Run setuptopall8 as before.

Windows8

1. Change to Administrator

- Go to Start.
- Select Control Panel
- Go to User Accounts.
- Click "Manage Another Account".
- Select the account you want to manage.
- Click "Change account type".
- Tick the administrator option.
- Click "change account type" to implement the changes.

2. Disable driver signature

- Select '**General**', scroll all the way to the bottom of the page and click on the restart button located under the '**Advanced Startup**' section.
- After restarting in the advanced mode, a screen will come up with two options. Select the '**Troubleshoot**' option.
- When the '**Troubleshoot**' option is selected, another window will appear. Find and click the option that says 'Advanced options'.
- In the advanced options window, select the '**Startup settings**' option.
- Inside the '**Startup settings**' window, a list of selectable boot options will appear. chose disable driver signature enforcement.(Win7 press the [7] key,Win10 press [OK])
- Once you've selected the option to disable driver signature enforcement reboot back into windows .

3. Run setuptopall8 as before.

Windows7

1. Change to Administrator

- Go to Start.
- Select Control Panel
- Go to User Accounts.
- Click "Manage Another Account".
- Select the account you want to manage.
- Click "Change account type".
- Tick the administrator option.
- Click "change account type" to implement the changes.

2. Run setuptopall8 as before.